

Clef

(Melody – 2/8)

Clef - Vocab

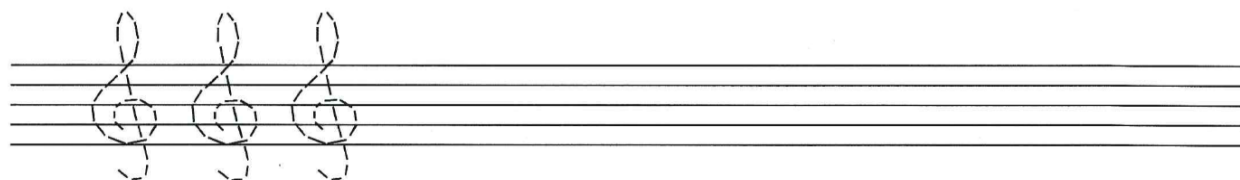
Please write in the definition for each music term just introduced related to Clef

Term	Definition
Contour	
Interval	

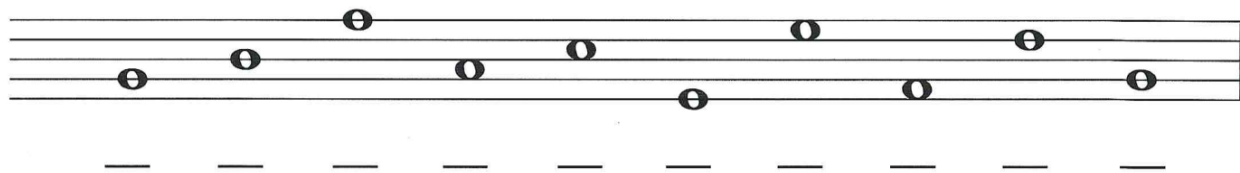
Clef – Review

Follow the directions below for each exercise to review your understanding of Treble Clef

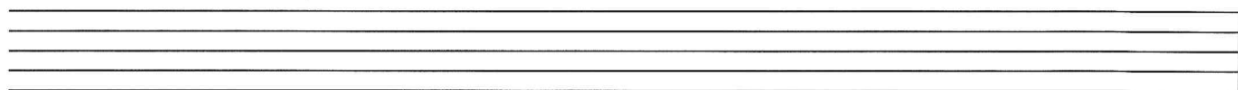
1. Try drawing the treble clef sign by tracing over the dotted lines. Then draw five more of your own.



2. Draw a treble clef at the beginning of the staff. Then write the letter names of each note.



3. Draw a treble clef at the beginning of the staff. Then draw the notes indicated. If a note can be written on more than one place on the staff, choose one.



G E B C D B A C D F

